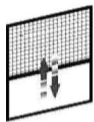
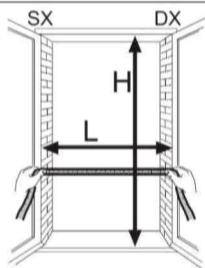


# ZANZARIERA AVVOLGIBILE VERTICALE PER FINESTRA VERTICAL ROLL-UP INSECT SCREEN



**ISTRUZIONI DI MONTAGGIO**  
INSTRUCTION SHEET  
cod. 9IMZ080 Rev. 1021

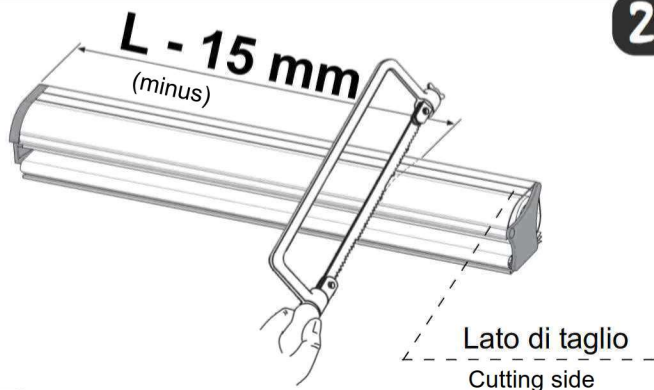
**1**



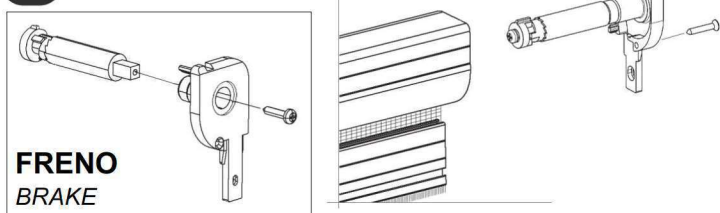
**NB:** la zanzariera è fornita pre-tagliata per la misura indicata nell'etichetta.

This insect-screen is already pre-cut for the dimension as on product label.

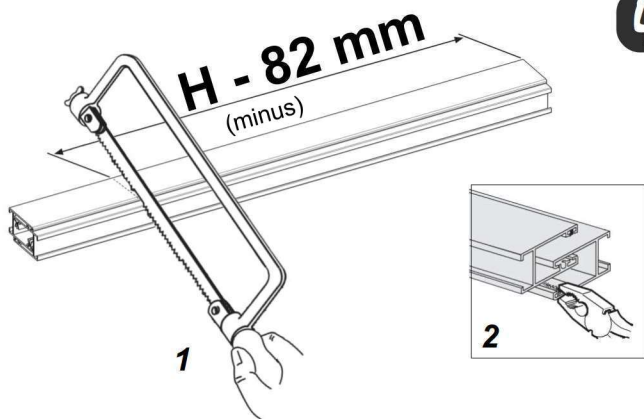
**2**



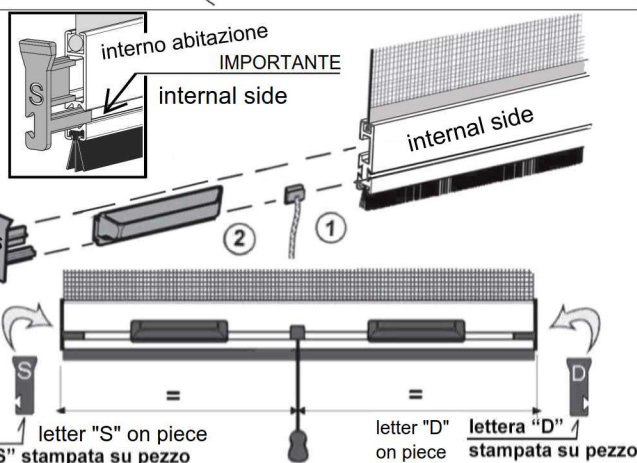
**3**



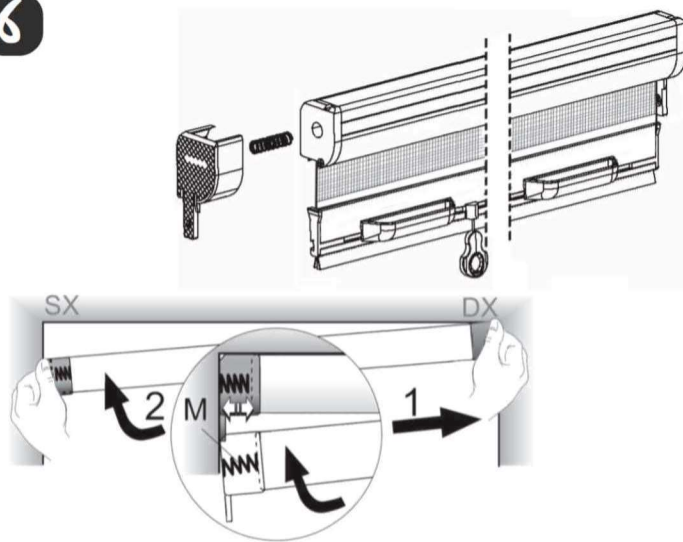
**4**



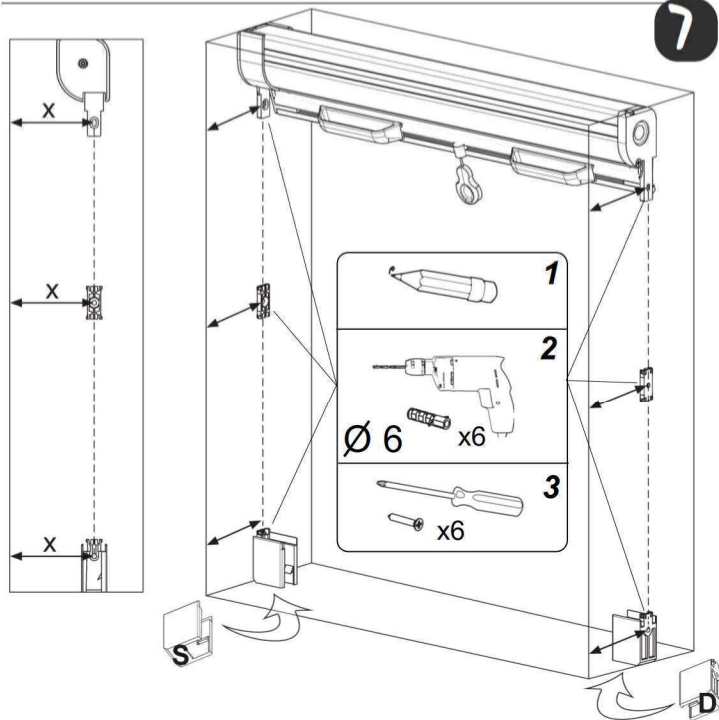
**5**



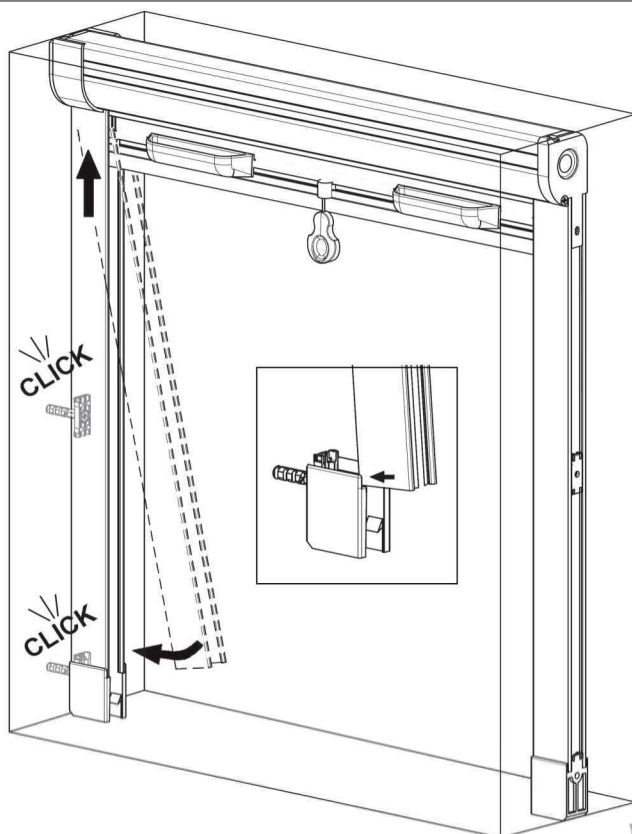
**6**



**7**

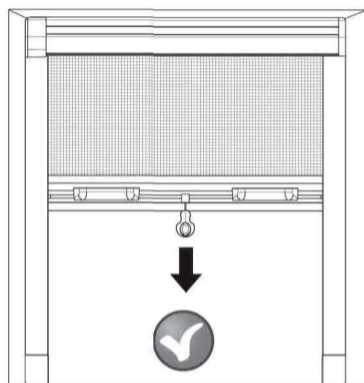


**8**

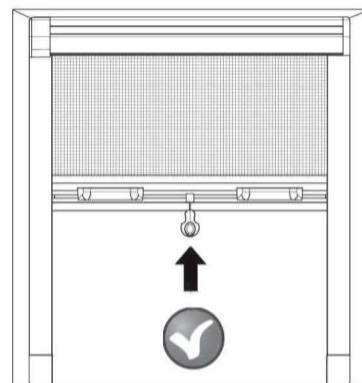
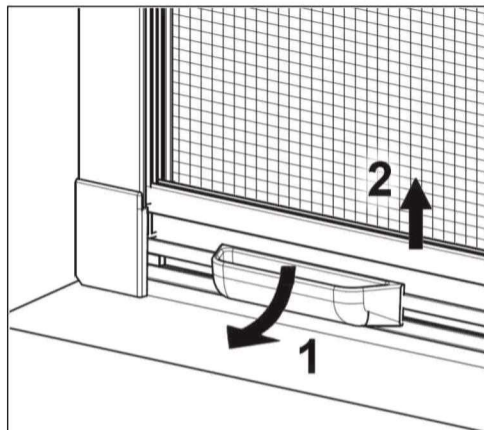




## chiusura closing



## apertura opening



### INSTRUCTIONS FOR USE AND MAINTENANCE

Wind resistance

**Congratulations! We wish to thank you** for the purchase of this mosquito net. We have prepared this manual to enable you to use this mosquito net safely and in the best possible way. We recommend reading it in all its parts before use and keeping it.

#### INTENDED USE

The mosquito net is intended exclusively for the protection against the entry of insects, such as mosquitoes or the like, from the openings where it is installed. The installation envisaged is the one with vertical sliding operation of the mosquito net. The mosquito net must be intended only for the use indicated above. Any other use is to be considered improper.

**Examples of improper uses are:**

- mounting with horizontal operation.
- ceiling mounting (e.g. skylights).
- hook or hang things on the mosquito net.
- support of things, animals or people to any part of the mosquito net.

The manufacturer cannot be held responsible for any damage deriving from improper use, or other than that for which the mosquito net is intended.

#### UNPACKING - HANDLING

Be careful when using pointed tools and / or so as not to damage the mosquito net. Check the integrity of the various parts (profiles, accessories box, etc.). Do not leave bags or other small loose components within reach of children. **ASSEMBLY OF ACCESSORIES:**

The mosquito net is assembled by the manufacturer as regards its fundamental parts; the other elements of the mosquito net are supplied disassembled. It will be the user's responsibility to assemble these parts in accordance with the instructions provided in each assembly KIT.

#### INSTALLATION WARNINGS

Use only and exclusively the components supplied in the assembly kit.

**!** Do not cling to it when installing the mosquito net.

If necessary, use silicone to close any gaps between the vertical guides and the walls of the window recess.



#### WARNINGS FOR USE

**ATTENTION! The spring-loaded mosquito nets present a serious danger of collision with the handle bar when opening.**

This model is equipped with a BRAKE, assembly is necessary to reduce the risk of impact when opening.

**To open** the mosquito net and rewind the net, rotate the handle bar profile inwards using both hands; then let the handle bar rise at a speed controlled by the braking device.

**To close** the mosquito net pull the cord downwards and as soon as possible place your hands in the special handles. Push down until the handle bar is locked in the hooks provided.

**!** With the mosquito net closed, avoid bumps on the handle bar, which could cause it to open quickly. **KEEP CHILDREN AWAY FROM THE MOSQUITO NET ATTACHMENT / RELEASE AREA \***

The BRAKE reduces the risk of collisions following accidental opening.

**!** ANY OTHER INTERVENTION THAT WILL

RESULT IN THE DISASSEMBLY OF PARTS THAT WERE ORIGINALLY ALREADY ASSEMBLED IS FORBIDDEN.

For these operations, contact the authorized center.

#### MANUTENZIONE

**Cleaning:** at least once a year, clean the mesh from dust or other residues. Use a bristle brush soft cloth or a cloth dampened only with water. For other metal and plastic parts, use a damp cloth with water. If during the cleaning operations (or due to strong air currents), the mesh comes out of the guides, it will be enough to open the sides and slowly close it to bring it back into place.

**Enamels:** when you decide not to use the mosquito net anymore, it recommends making those dangerous parts innocent, especially for children. Since the mosquito net is made up of easily recyclable materials, it can be divided into homogeneous parts and disposed of according to the regulations in force.

#### DECLARATION OF CONFORMITY:

- To the Regulations **N° 305/2011** and harmonized standard **EN13561**

- To the Machinery Directive **2006/42/CE**

*Medal s.r.l. has drawn up the Technical Dossier relating to this model.*

Technical Dossier Manager:

Mr. Fabio Mingrone

Legal representative:

MEDAL srl - Via dell'Industria n°12 40023 Castel Guelfo (Bo) Tel. 0542 670101 info@medal.it



WhatsApp

+39 334 8652182



dubbi? contattaci!  
doubts? contact us!